



**eVIEW**  
GLOBAL  
Nature Smart Solutions

# E-View Global (P) Ltd

Daylight Harvesting, Ventilators,  
Integrated Day lighting,  
Eco Roof and Eco Flat Boards

[www.eviewglobal.com](http://www.eviewglobal.com)

# About Team E-View

- Group of young professionals qualified from institutes of repute.
- The team has wide industrial experience ranging from 12 years to 22 years in large organizations in India and abroad as CEO, COO, Head of marketing, Head of various departments.
- The team consists of varied experience ranging from top management right to the floor level implementation of projects enabling us to understand the pain areas of partners easily and work according to their priorities.



# Services Provided by E-View

## Daylight Harvesting with Ventilators



## Eco-Roof & Eco FlatBoards





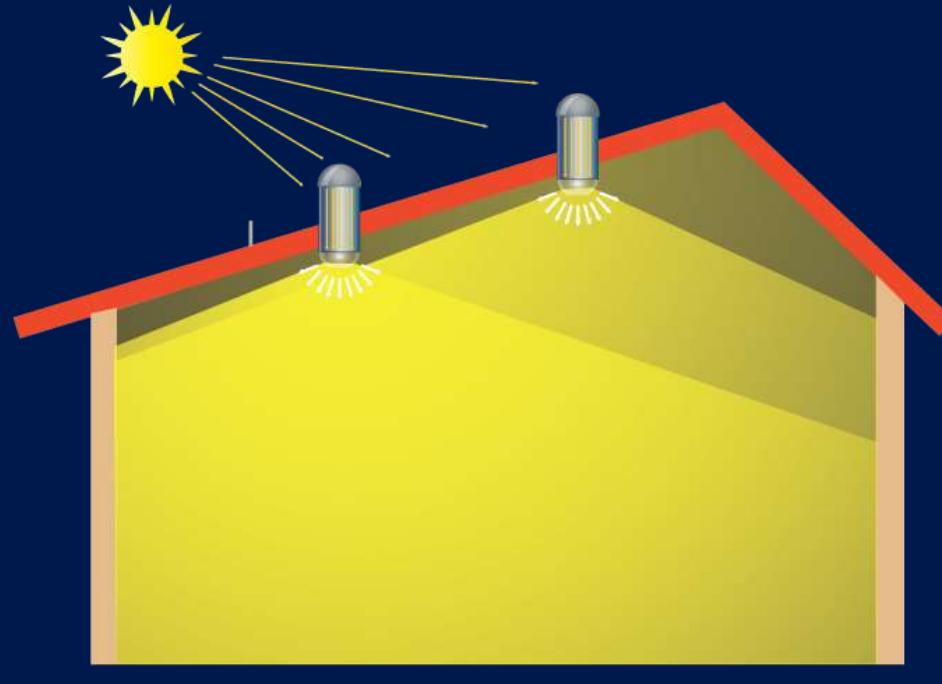
# What is DayLight harvesting?



- DayLighting is the practice of placing windows or other openings and reflective surfaces.
- So that during the day natural light provides effective internal lighting.
- Particular attention is given to DayLighting while designing a building when the aim is to maximize visual comfort or to reduce energy use.
- Energy savings can be achieved from the reduced use of artificial (electric) lighting.
- Artificial lighting energy use can be reduced by simply installing fewer electric lights because daylight is present.
- By dimming/switching electric lights automatically in response to the presence of daylight.
- Eliminates or reduces the adverse effects of static artificial lighting

# Working of SkyPipe™

High grade of Poly Carbonate (PC) dome collects and concentrates ambient day light. The PC is UV stabilized. The highly reflective tube delivers high light levels for maximum illumination with reflectance of over 95 to 98+%. High Light Capture even at low sun angles.



# SkyPipe For False Areas

- Sizes available: 900 mm, 750 mm, 530 mm, 400 mm, 300 mm
- Clear Prismatic high light collecting dome
- Choice of Diffuser material – Prismatic Lenses, Spectra Bright, Clear Glow, Lacta Glow, Semi Lacta Glow
- Shape: Flat and dome shaped
- UV stabilized
- 2 feet Highly reflective tubing 95% + reflectance.
- Excellent Light and heat control.
- Light coverage of over 1100 sq.ft. based on roof height and desired lux.
- Suitable for all types of roofs including with false ceiling.
- Highly uniform lighting spread.

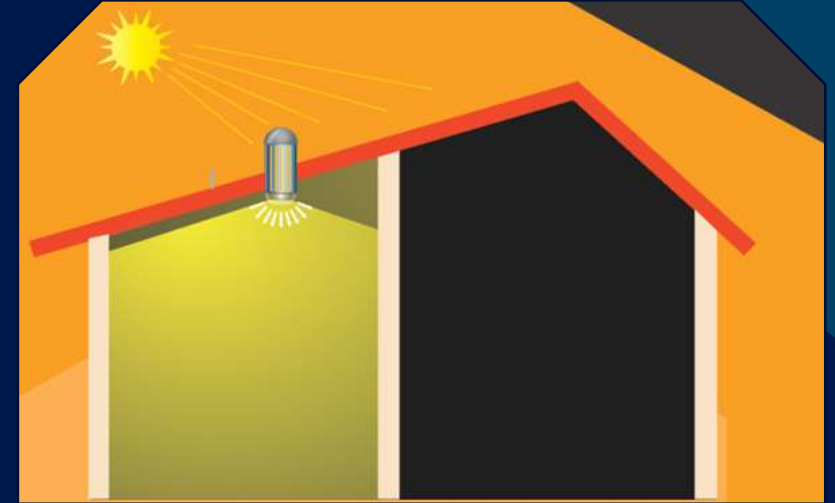


# Light Ball For Non False ceiling areas

## Circular shape with water guide



- Sizes available in Light Ball 1200 mm, 1000 mm, 900 mm, 750 mm, 530 mm, 400 mm, 300 mm
- Suitable for Warehouses, Factory sheds / shop floors etc.
- Clear Prismatic high light collecting dome
- Options of diffuser -: Clear glow, Lacto glow (structured and non structured)
- Reflective tube to guide the light to the floor area for better light control
- Matching roof adaptor to roof profile
- High coverage area up to 1600 Sq.ft.
- Suitable for any roof except with false ceiling.
- Uniform lighting spread.
- Better and improved light and heat control.
- Better aesthetics





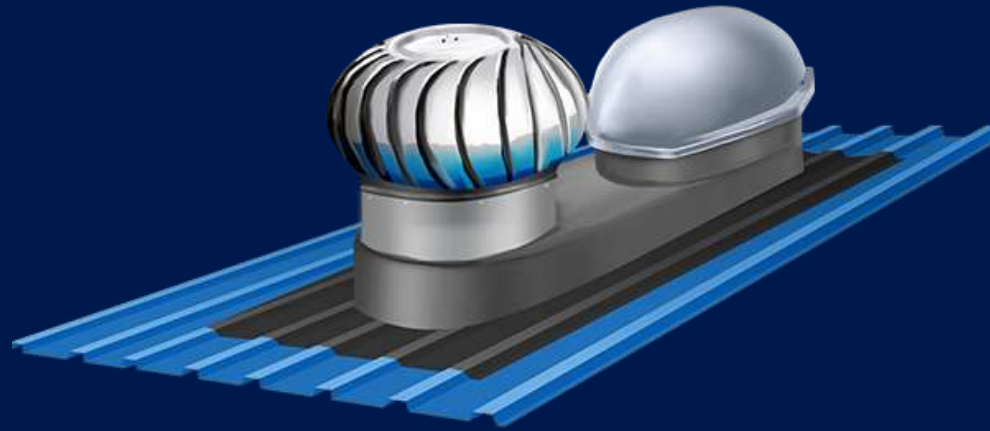
# BoxiBright

Higher Light collecting Prismatic dome with matching roof profile, made out of single mold. Custom size available with maximum gross size of 1.70 mtrs X 3.65 mtr matching roof profile.





# FEATURES



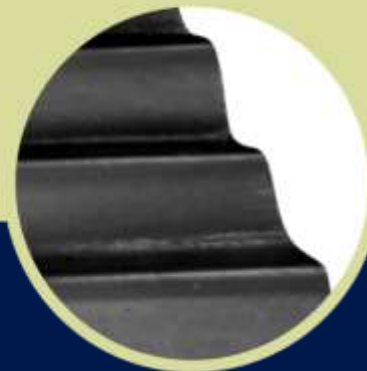
Roof adaptor matches the roof profile ensuring no leakage with passage of time.



Rain water flows smoothly thru the water passage provided. Sealeant life is maintained for a longer time due to smooth flow of water



FRP roof adaptor made with first grade special material and gel does not get affected by rain water and has a very long life

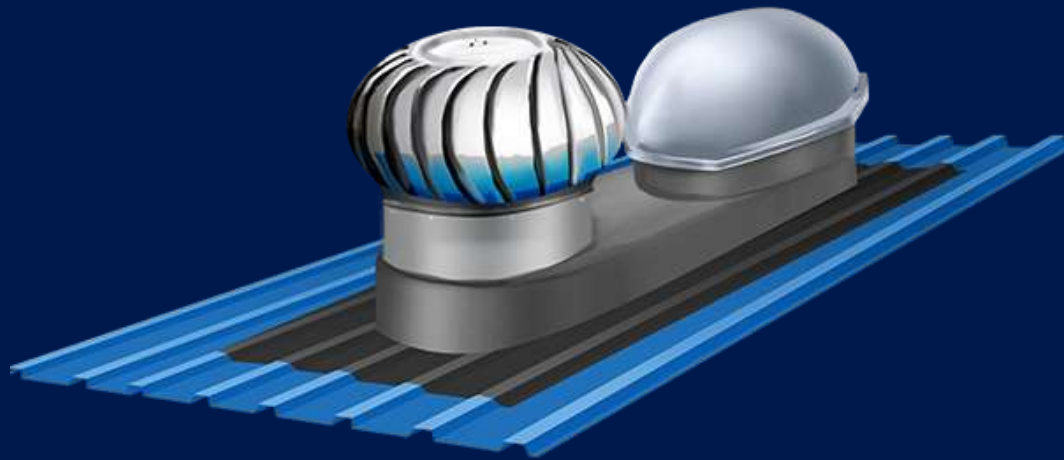


Special long life sealing tape used to seal the edges as an extra protection against leakages



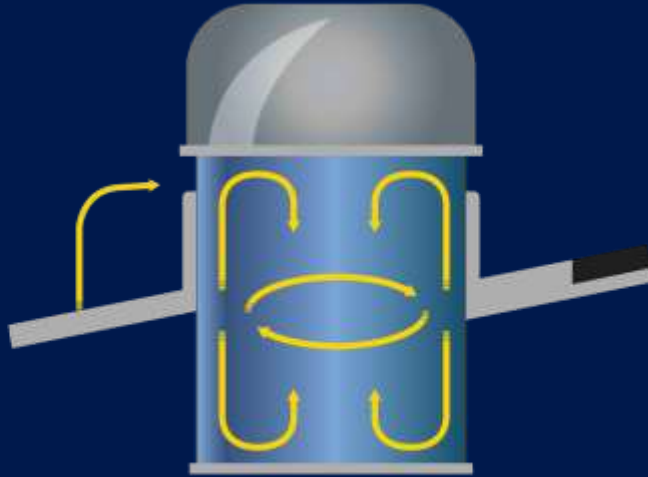


## NATURAL AIR CIRCULATION SOLUTION COMBO WITH NATURAL LIGHT



- Meets the need for Natural Light and air circulation.
- Ensures Effective and uniform Light and Air circulation.
- No power cost for Light and air circulation.
- Common roof opening for SkyPipe™ and turbo thus maintaining the strength of the roof.
- Effective in releasing hot air and fumes from the inside without maintenance.
- Water seepage and dust thru turbo fins will not enter the shed during very strong wind.
- Open able duct option in case cleaning required.
- Cost effective as no additional installation cost.
- 100% customized design as per the areas requirement.

# Minimal Heat Transfer



- SkyPipe™ has a static air column which reduces the heat transfer.
- Longer length tube further reduces heat transfer.
- The surface area of SkyPipe™ exposed to the Sun is very insignificant.
- Heat Insulation can be put from the inside to the roof which other wise not possible with Transparent sheets.

Showing a temperature of 34.2 degree temperature. Cooler than any normal light, lit for 30+ minutes.







## EVIEW SMART LIGHT SOLUTIONS



- We integrate LED lights with daylight that inspire people to work at their best. We design a web of sensor with LED and SkyLights to fully automate the lighting 24X7.
- LED lights fitted with sensors
- Lux sensors to monitor the Lux level Progressive dimmer to maintain required Lux level
- Automate entire lighting by integrating the LED, Skylights and Dimmers thru sensors 24X7
- Maintain the desired level of Lux throughout
- No human intervention required
- Option of motion sensor integration
- Save on lighting cost without compromising on desired lux.
- We custom design every solution.



# QUALITY OF LIGHT

- UV stabilized optical diffuser gives uniform and broader light dispersion.
- Can deliver day light even to dark corners
- The system is Aesthetic and creates better ambience.

## Transformation of sheds after SkyPipe being installed.





# Stages of SkyPipe™ demonstrates the effect in the area



**Poor quality of Natural  
Lighting thru  
Transparent sheets**



**Trial of SkyPipe for  
Natural Lighting along  
with Transparent  
sheets**



**High quality of Natural  
Lighting thru  
SkyPipe™**



**BEFORE**

**AFTER**



**BEFORE**

**AFTER**





## AVOIDS ROOF TOP ACCIDENTS



SkyPipes are clearly visible from a distance.

Transparent sheets gets camouflaged due to dust settled over it allowing roof top accidents.





# ADVANTAGES

Natural benefits of Sunlight

Skypipe brings natural light indoors

Unwanted elements of daylight are filtered out

Natural dynamic light helps maintain hormonal balance

20 + years life

Zero maintenance

100 % Matching roof adapter

Lower Energy bills

Cusomised units

Heat Reduction



Carbon Footprint  
Reducer



Healthy



Eco-Friendly



Power Saving



Resistant to  
High Temperature



UV Protection



Zero Maintenance



# INSTALLATIONS





# Eco roof and Boards

Eco roof and Boards corrugated roof and flat boards made out of 100% recycled plastic waste. It is 6 mm thick, with the tensile strength of 99Kg / Sq. Inch. This roof comes with an aluminum lamination on the top, thus reflecting heat away and keeping the shed cooler 7 to 10 degrees compared to other sheds.

## Eco roof



## Eco Flat Boards





## USP OF ECO ROOF AND FLAT BOARDS

- Tensile Strength 99 kg/cm<sup>2</sup>
- Thickness of Roof Sheet 6 mm with Al lamination.
- Thickness of Eco Flat board 6 mm to 12 mm
- Material composition 70% Polyethylene + 30% aluminum foil
- Resistant to Sulphuric acid (5% w/w for 24 hrs)
- Resistant to alkali (2% sodium carbonate for 24 hrs)
- Resistant to salt spray (5% NACL for 72 hrs)



# ADVANTAGES



**Water Proof**



**Resistant to  
High Temperature**



**Long Lasting**



**Non-Corrosive**



**Borer Resistant**



**Recyclable**



**UV Protection**



**It is Non-Toxic**



**Non-Breakable**



**Fire Retardant**



# COMPARISON TABLE

Properties	ECO Roof	Asbestos Cement	Galvanized Iron	Polycarbonate
Reduce heat / temperatures inside it	Yes (by 5-7 Degree Celsius)	No	No	No
Water Proof	Yes	Yes	Yes	Yes
Fire Retardant	Yes	Yes	Yes	Yes
Non - Corrosive	Yes	No	No	Yes
Chemical Resistant	Yes	Yes	No	No
Non-Toxic	Yes	No	No	Yes
Long Life Span	Yes	Yes	No	Yes
Reduce Noise Decibel Level inside during Rains	Yes as Thickness=6mm	Yes as Thickness=6mm	No as Thickness=0.5mm	Depends on thickness. Price for 2mm is 4-5 times POLYAL or GI
Environment Friendly	Yes	No	No	No

# CLIENTELE





# E-VIEW GLOBAL (P) LIMITED

Regd. Office and communication.

Plot No. SM231

M.T. Sagar Industrial Area 1st Gate,

Gokul Road, Hubballi-580030

Contact. No. +91 97694 21112

Email: [rajiv@eviewglobal.com](mailto:rajiv@eviewglobal.com)

Kanpur Anand Bajapai Call : +91 87650 70591

Mumbai Rajiv Gupta (CEO) Call: +91 97571 58328

Hubli Shivanand Balehosur Call: +91 87921 82631

